

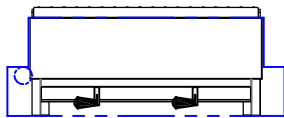
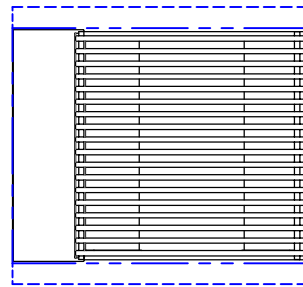
A1TS, A1TS/SS, A1TS/B60



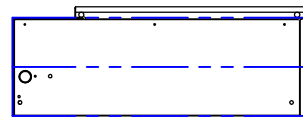
LAZYSMAN A1TS, A1TS/SS
OPEN HEARTH GRILL
INSTALLATION METHOD #1
GAS PIPING ROUTED TO REAR
ISLAND CUTOUT IN BLUE

SCALE: 1:1

TOP VIEW



FRONT VIEW



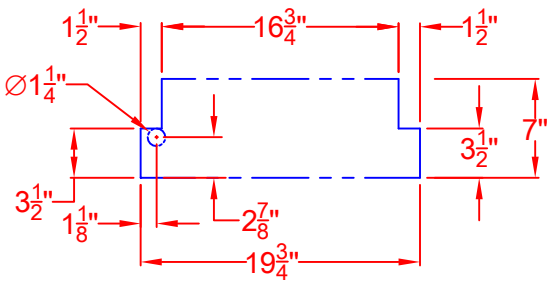
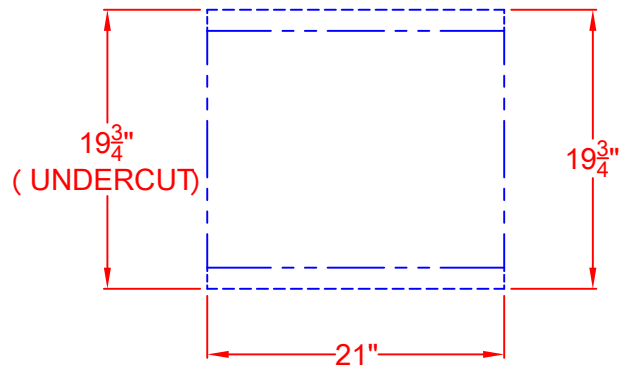
RIGHT SIDE VIEW



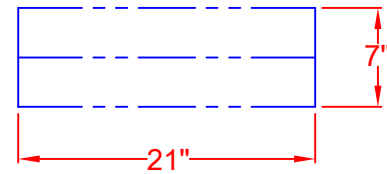
LAZYSMAN A1TS, A1TS/SS, or A1TS/B60
OPEN HEARTH GRILL
ISLAND CUTOUT
INSTALLATION METHOD #1
GAS PIPING ROUTED TO REAR

SCALE: 1:1

TOP VIEW



FRONT VIEW



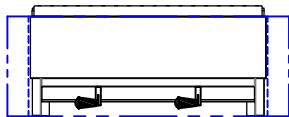
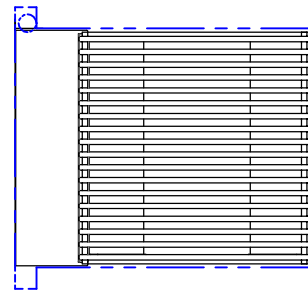
RIGHT SIDE VIEW



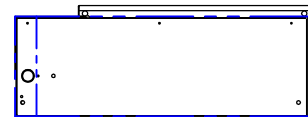
LAZYSMAN A1TS, A1TS/SS
OPEN HEARTH GRILL
INSTALLATION METHOD #2
GAS PIPING ROUTED
STRAIGHT DOWN
ISLAND CUTOUT IN BLUE

SCALE: 1:1

TOP VIEW



FRONT VIEW



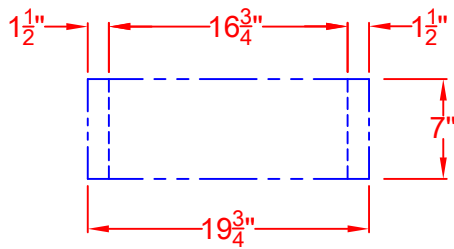
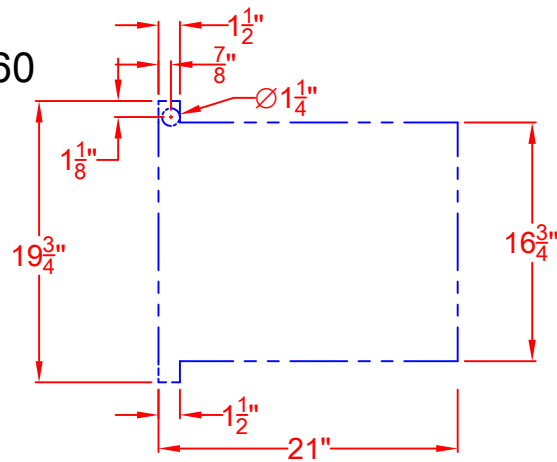
RIGHT SIDE VIEW



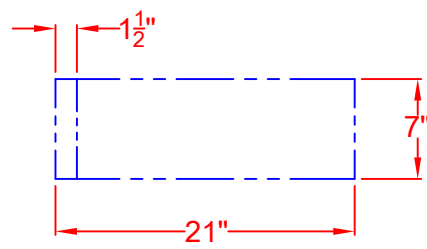
LAZYMEN A1TS, A1TS/SS, or AITS/B60
OPEN HEARTH GRILL
ISLAND CUTOUT
INSTALLATION METHOD #2
GAS PIPING ROUTED
STRAIGHT DOWN

SCALE: 1:1

TOP VIEW



FRONT VIEW



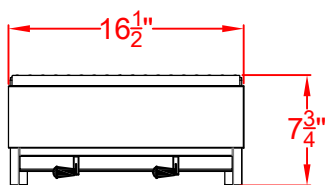
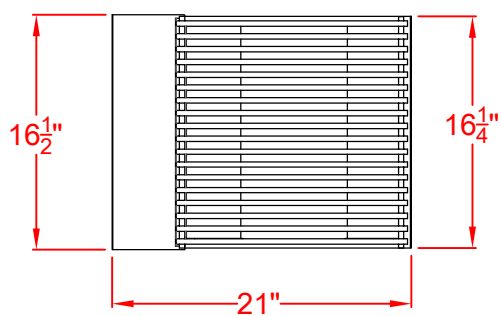
RIGHT SIDE VIEW



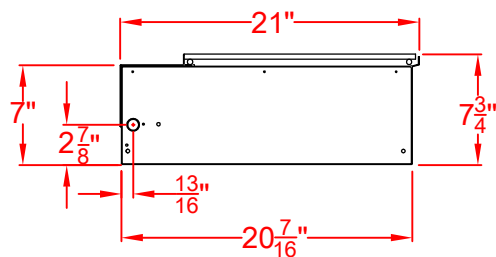
LAZYMEN A1TS, A1TS/SS
OPEN HEARTH GRILL
WITH DIMENSIONS

SCALE: 1:1

TOP VIEW



FRONT VIEW



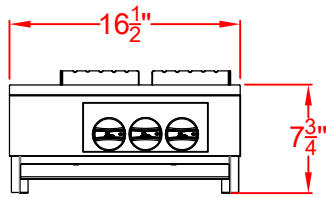
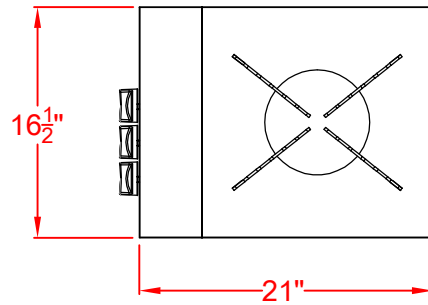
RIGHT SIDE VIEW



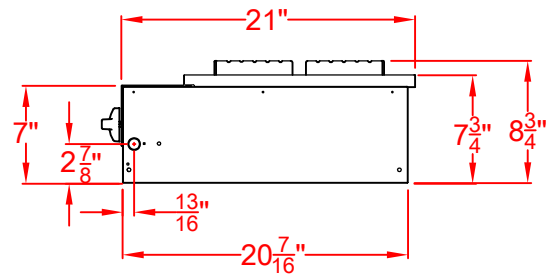
LAZYSMAN A1TS/B60
OPEN HEARTH/ BIG 60 BURNER
WITH DIMENSIONS

SCALE: 1:1

TOP VIEW



FRONT VIEW



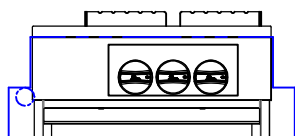
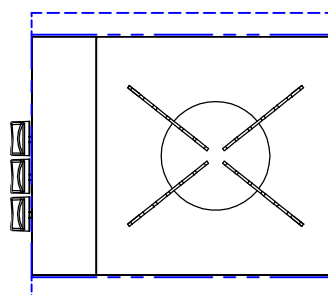
RIGHT SIDE VIEW



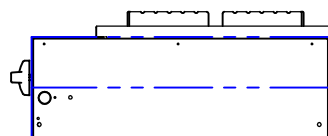
LAZYMAN AITS/B60
OPEN HEARTH/ BIG 60 BURNER
INSTALLATION METHOD #1
GAS PIPING ROUTED TO REAR
ISLAND CUTOUT IN BLUE

SCALE: 1:1

TOP VIEW



FRONT VIEW

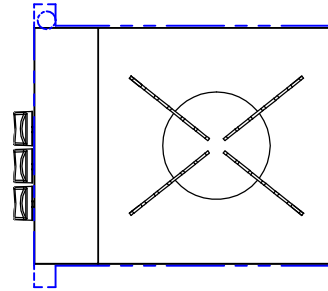


RIGHT SIDE VIEW

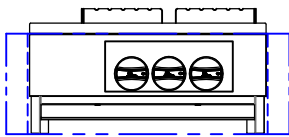


LAZYMAN AITS/B60
OPEN HEARTH/ BIG 60 BURNER
INSTALLATION METHOD #2
GAS PIPING ROUTED
STRAIGHT DOWN

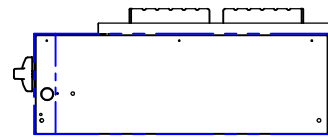
TOP VIEW



SCALE: 1:1



FRONT VIEW



RIGHT SIDE VIEW